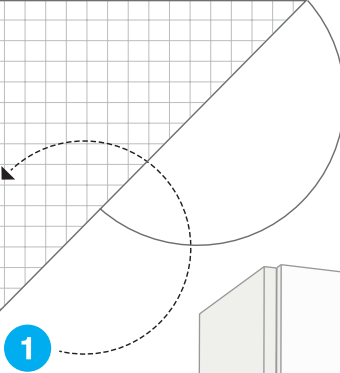


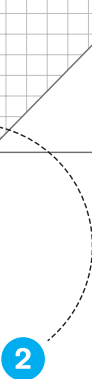


# FLATGOODS

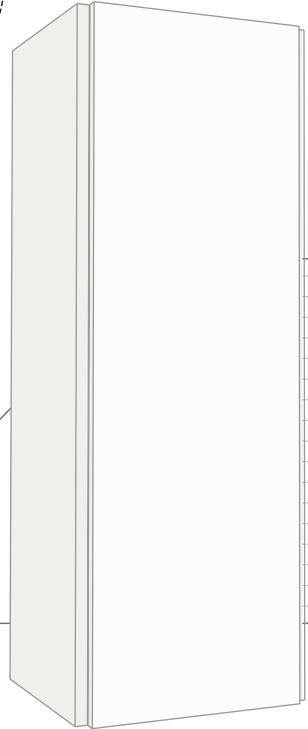
Custom Furniture & Displays in No Time Flat



1



2



**Monolith**

Assembly Instructions

# Parts

## Important!

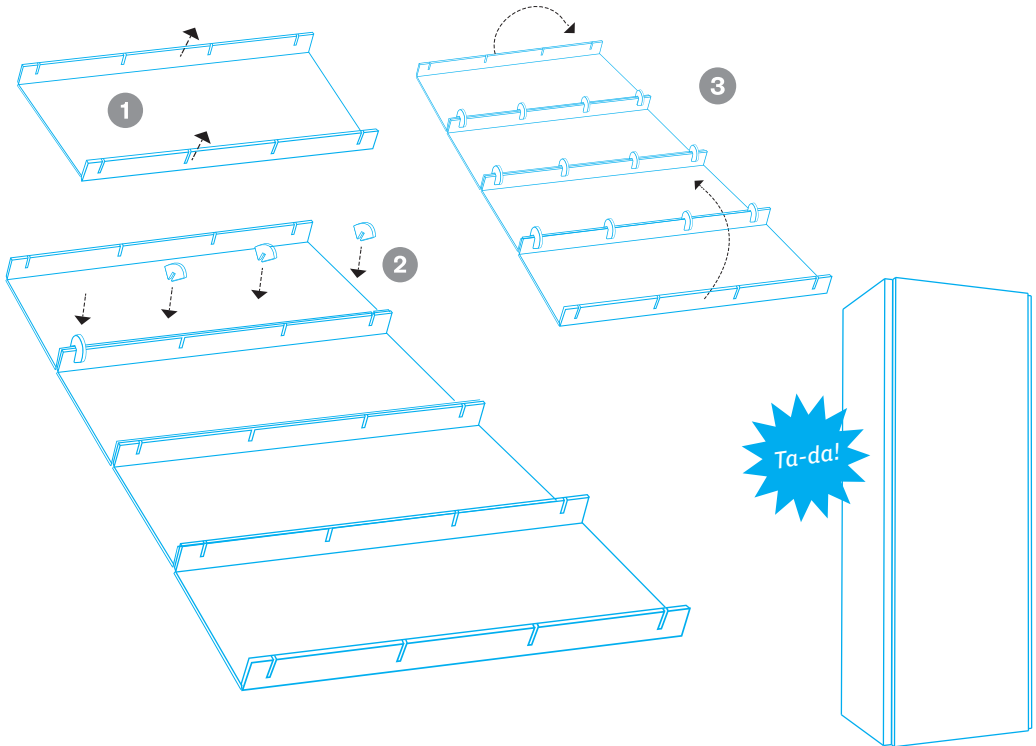
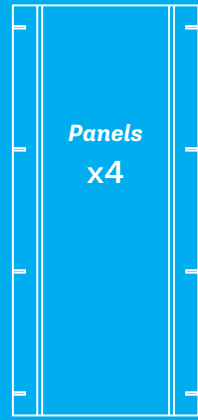
Be sure the floor you're working on is clean. Construct this unit flat on the ground and stand it up when finished.

Unless you have incredibly long arms, you will have to crawl inside to make the final attachments.

## Connectors x16



## Panels x4



## Assembly Tips

With Flatgoods, no fasteners are required! It's a series of folds and tabs that fit tightly together. A few words of advice:

1. Use two hands and apply gentle, even pressure
2. Be patient; forcing is never good.
3. Be sure that joints and tabs are pushed all the way together. This ensures a snug and sturdy fit.

## Enjoy your Flatgoods to the fullest.

- Keep 'em dry. If you spill on your Flatgoods, wipe it up quickly and let it dry before use.
- Feel free to assemble and disassemble your Flatgoods as often as you like, but remember: they're cardboard.
- Treat your Flatgoods with care, use them for intended purpose, and you'll be amazed how long they will last. Simple as that!